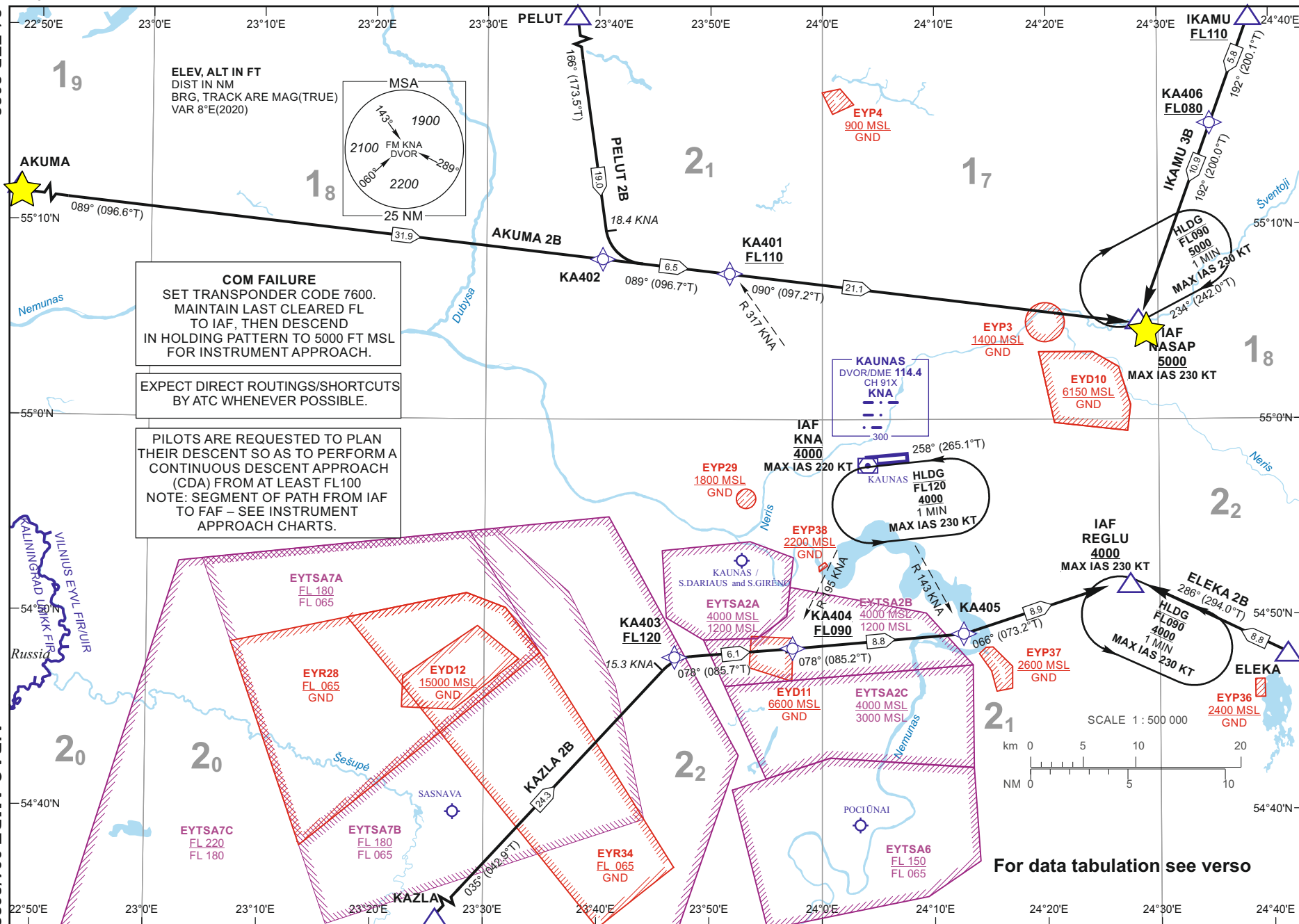


**KAUNAS**  
**Rwy 26**  
AKUMA 2B, ELEKA 2B,  
IKAMU 3B, KAZLA 2B, PELUT 2B

24 FEB 2022

©2019 ORO NAVIGACIJA

AIRAC AMDT 001/2022



**KAUNAS****RNAV (GNSS, VOR/DME) OVERLAY****STAR RWY 26****TABULAR DESCRIPTION****STANDARD INSTRUMENT ARRIVAL (STAR) ROUTES**

STAR NAME	ROUTE	FL/ALTITUDE RESTRICTIONS
<b>AKUMA 2B</b>	From AKUMA on track 089°. Cross R-317 KNA, turn right on track 090° and proceed to IAF NASAP.	Cross R-317 KNA at FL110 or above. Cross NASAP at 5000 FT MSL or above.
<b>ELEKA 2B</b>	From ELEKA on track 286° proceed to IAF REGLU.	Cross REGLU at 4000 FT MSL or above.
<b>IKAMU 3B</b>	From IKAMU on track 192° proceed to IAF NASAP.	Cross IKAMU at FL110 or above. Cross KNA DME 25 NM at FL080 or above. Cross NASAP at 5000 FT MSL or above.
<b>KAZLA 2B</b>	From KAZLA proceed on track 035°. At KNA DME 15.3 NM, turn right on track 078°. Cross R-143 KNA, turn left on track 066° and proceed to IAF REGLU.	Cross KNA DME 15.3 NM at FL120 or above. Cross R-195 KNA at FL090 or above. Cross REGLU at 4000 FT MSL or above.
<b>PELUT 2B</b>	From PELUT proceed on track 166°. At KNA DME 18.4. NM turn left on track 089°. Cross R-317 KNA, turn right on track 090° and proceed to IAF NASAP.	Cross R-317 KNA at FL110 or above. Cross NASAP at 5000 FT MSL or above.

**RNAV STAR WAY POINT CODING (All segments – TF legs)**

STAR NAME	ROUTE
<b>AKUMA 2B</b>	AKUMA - KA402 - KA401[F110+] - IAF NASAP[A5000+;K230-]
<b>ELEKA 2B</b>	ELEKA - IAF REGLU[A4000+;K230-]
<b>IKAMU 3B</b>	IKAMU[F110+] - KA406[F080+] - IAF NASAP[A5000+;K230-]
<b>KAZLA 2B</b>	KAZLA - KA403[F120+] - KA404[F090+] - KA405 - IAF REGLU[A4000+;K230-]
<b>PELUT 2B</b>	PELUT - KA402 - KA401[F110+] - IAF NASAP[A5000+;K230-]

**WAYPOINT COORDINATES**

FIX/POINTS	COORDINATES	RADIAL/DISTANCE
<b>KA401</b>	55 07 29.2N 023 51 43.1E	KNA R317.0/D12.1
<b>KA402</b>	55 08 14.1N 023 40 24.6E	KNA R300.7/D17.2
<b>KA403</b>	54 47 47.8N 023 46 53.8E	KNA R217.7/D13.9
<b>KA404</b>	54 48 15.8N 023 57 22.5E	KNA R194.7/D10.1
<b>KA405</b>	54 49 01.1N 024 12 35.3E	KNA R142.5/D10.0
<b>KA406</b>	55 15 11.1N 024 34 40.9E	KNA R037.3/D24.9
<b>AKUMA</b>	55 11 37.8N 022 45 10.6E	KNA R280.2/D47.4
<b>ELEKA</b>	54 48 01.6N 024 41 20.1E	KNA R106.2/D23.6
<b>IKAMU</b>	55 20 40.3N 024 38 12.5E	KNA R032.6/D30.3
<b>KAZLA</b>	54 29 59.3N 023 18 33.8E	KNA R216.3/D38.2
<b>NASAP</b>	55 04 57.2N 024 28 10.6E	KNA R054.5/D15.7
<b>PELUT</b>	55 27 04.4N 023 36 37.1E	KNA R324.7/D33.4
<b>REGLU</b>	54 51 37.2N 024 27 23.7E	KNA R106.3/D14.8
<b>KNA</b>	54 57 37.4N 024 03 59.1E	

FOR DETAILED FLIGHT PROCEDURES REFER TO AIP EYKA AD 2.22

Changes: description of STAR KAZLA 2B.